



TAKING SMART
CONSTRUCTION TO
NEW HEIGHTS

A50
ECO CRANE

ARCOMET 
Proudly owned by **UPERIO**

A50 ECO SELF-ERECTING CRANE

Discover the A50 Eco, by far the largest self-erecting crane in the Arcomet range. The crane is 36 metres high, has a jib length of 50 metres, and can lift a maximum of 8,000 kg.

The very latest control technologies make it more cost-effective and easy to use than ever before:

- Limited erection space: the jib automatically unfolds at height. Takes up less space at the building site.
- Saves energy: the frequency-controlled motors use less power (runs on 32A, 40A and 63A).
- Easy unfolding: the A50 Eco uses telescopic rods to prevent a tangle of cables.





EFFICIENT
DURABLE
RELIABLE

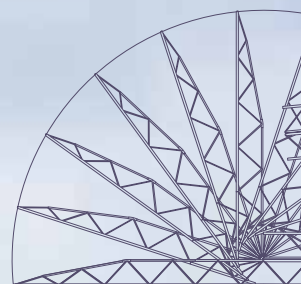
A50

SELF-ERECTING CRANE **MADE IN BELGIUM**



"All of our Eco cranes, including the A50 Eco, are equipped with frequency-controlled motors. This feature saves energy, improves accuracy, and increases the service life of your construction crane."

*David Janssen,
Product Director at Arcomet*



THE LATEST GENERATION OF SELF-ERECTING CRANES ARE MORE COST-EFFECTIVE

Lower power requirements:

Frequency-controlled motors make it possible to reduce power consumption when appropriate and run on 32 A, 40 A or 63 A. The operator controls engine power, adjusting as needed based on speed and crane load. This ensures your crane will not be constantly operating at maximum capacity, thus reducing power usage requirements. Additionally, the front jib unfolds using an efficient and accurate electric motor instead of a hydraulic motor. You can keep working with the crane, even with the front jib section folded back. It's better for the environment and better for your business.

Precise operation:

As the frequency-controlled motor adjusts its speed to the crane load, you can operate the crane with far greater precision. You will no longer need to deal with swinging loads, and your crane will always operate at the optimal speed. You'll not only enjoy the added precision, but you'll get a longer life from an Arcomet crane.

Smart control with Arconnect:

The crane sends data on the crane's use and operation back to Arcomet. This diagnostic data allows us to quickly identify the cause of any breakdown, see when it's time for periodic maintenance, and provide you targeted support and advice for the next building site.



SIMPLY SMART

THE NEW GENERATION

THE ARCOMET CAB

A COMFORTABLE WORKPLACE THAT MAKES YOUR CRANE OPERATORS FEEL RIGHT AT HOME

Crane operators often spend long work shifts in their cab. Fighting fatigue and maintaining focus and concentration at a high level is a challenge when their workplace is uncomfortable and inefficiently designed. To address this critically important issue, we have designed our operator cab with a focus on ergonomic posture, excellent visibility, and superior protection from hot and cold climate conditions.

Our ergonomically positioned controls allow the operator to maintain a healthy and natural posture. The cab seat features multiple adjustment controls that allow each operator to find the most comfortable position. Over the course of a long work shift, these ergonomic considerations reduce fatigue and contribute to job site safety by allowing the operator to focus more closely on the task at hand.

- Large, easy-to-read displays
- Protection from climate conditions

Large, easily readable operating data displays are conveniently arranged in glare-free positions to enhance operator comfort and efficiency. Generously sized windows provide perfect visibility to the job site and the load.

Last but not least, a powerful heating and air conditioning system with adjustable air nozzles delivers ideal workplace temperatures quickly, making the operator feel right at home.

The Arcomet cab helps crane operators stay in control...safely and comfortably.

- **SAFE, HEALTHY AND COMFORTABLE WORKPLACE**
- **EXCELLENT VISIBILITY ONTO THE JOB SITE AND LOAD**
- **ERGONOMICALLY ARRANGED CONTROLS**
- **MULTI-ADJUSTABLE OPERATOR SEAT**
- **LARGE, EASY-TO-READ DISPLAYS**
- **PROTECTION FROM CLIMATE CONDITIONS**





PEAK PERFORMANCE DEMANDS THE BEST EQUIPMENT

- Hook height: 36 m
- Number of climbing towers: 5
- Jib length: 50 m
- Maximum load: 8,000 kg
- Maximum load at 50 m jib length: 1,500 kg
- Set up: 4.8 x 4.8 m
- Power supply: 32, 40 or 63 A
- Foldable front jib
- Stainless steel electrical cabinet
- Tilt hatch with gas cylinders
- Lamp column indicates 90 -100 % of max load/moment and radio control function
- Heating and cooling in electrical cabinet
- 230 V/2A socket for charging remote control battery
- Pre-equipped with site lighting
- Pre-equipped with zone limitation/anti-collision
- Telemetry option
- Cabin option
- Zoning option
- Preparation for anti-collision system



QUALITY SAFETY SERVICE

ARCONVIET

HIGH SAFETY STANDARDS IN THE CONSTRUCTION SECTOR

THE SAFETY OF YOUR EQUIPMENT IS CRUCIAL. ARCOMET ENSURES THAT YOUR PEOPLE ARE SAFE.

Your A50 Eco crane has various sensors that influence its safe erection and operation. A PLC driven program ensures sequential operation. This means that each step must be completed before another step can be executed.

Your A50 Eco Crane is equipped with an electronic load moment system, ensuring that your crane will not overload. This fully electronic system uses dual verification (redundancy), ensuring the crane will not be damaged, while saving you from other disasters.

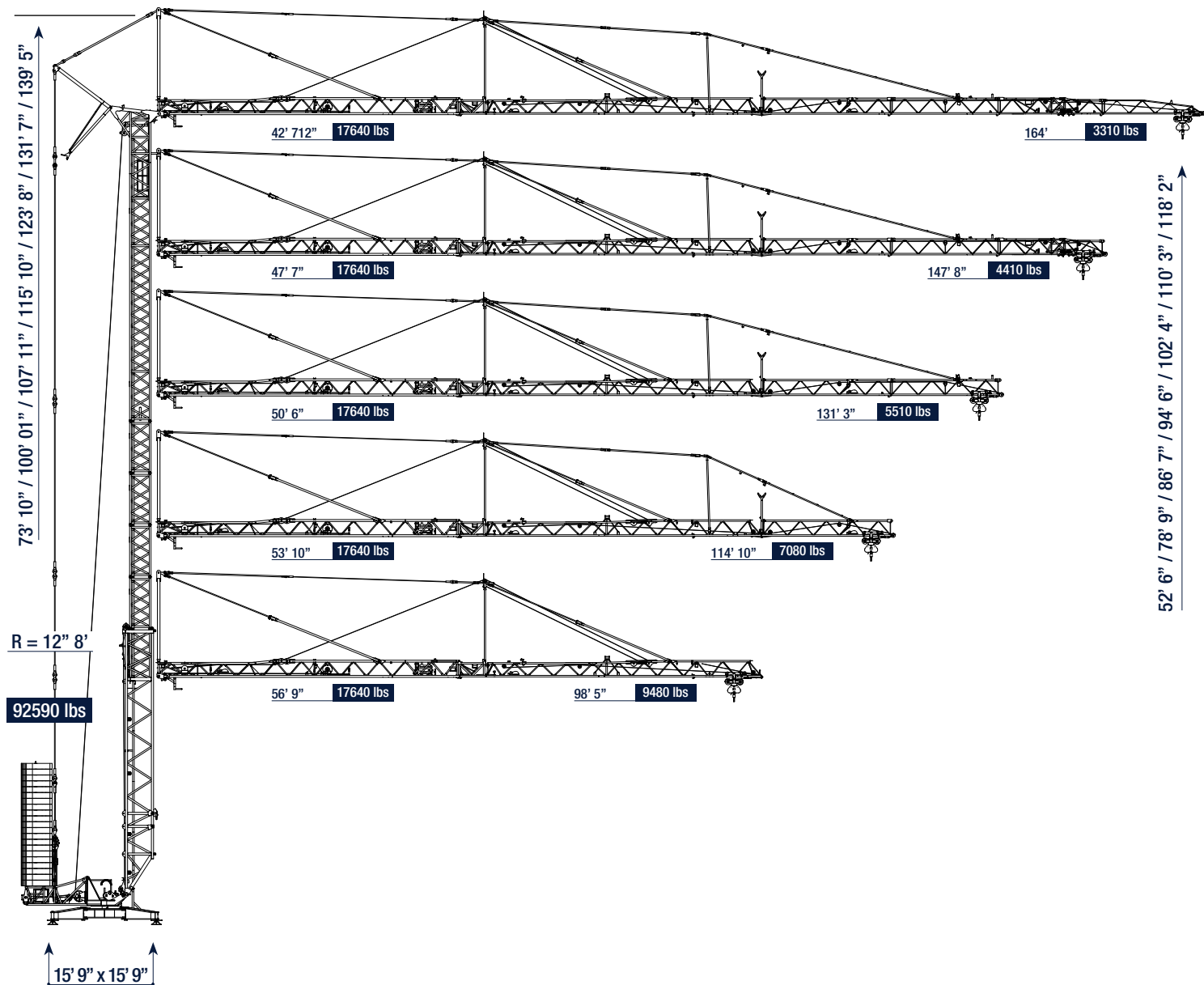
The crane is equipped with a fault management system for easy troubleshooting.



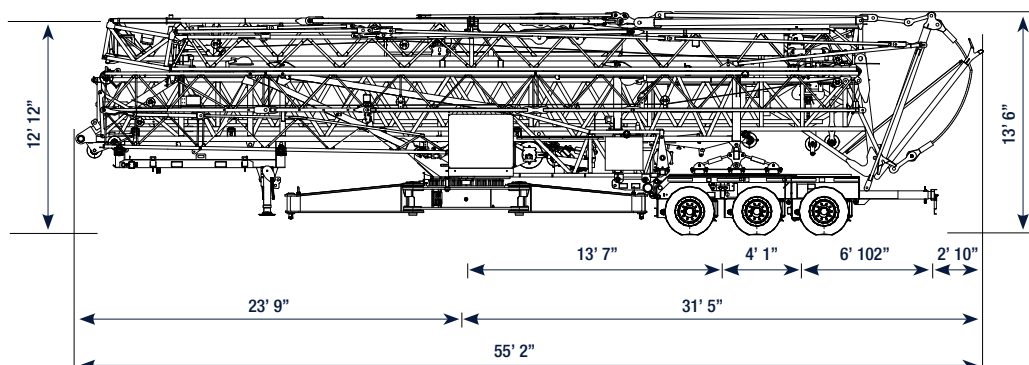


Electronic commissioning of the crane using a display in the electric control cabinet.

A50

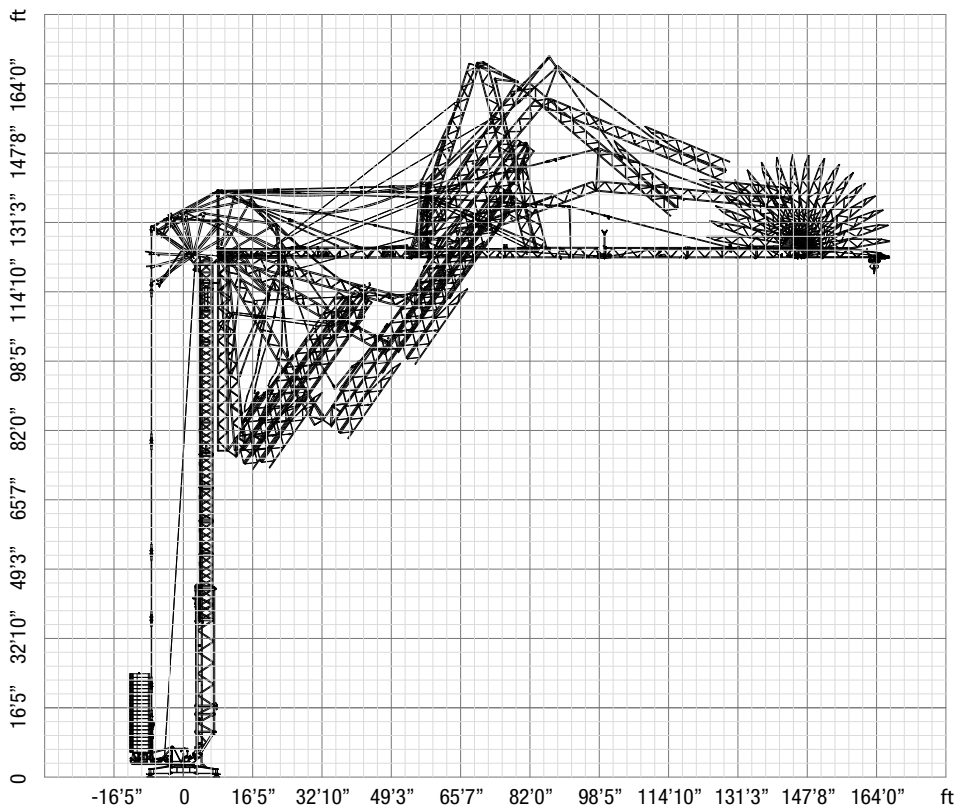


TRANSPORT



QUALITY SAFETY SERVICE

ARCOMET



LOAD CURVES



ft	0 - 42' 12"	65' 7"	72' 2"	82' 0"	91' 10"	98' 5"	104' 12"	114' 10"	124' 8"	131' 3"	137' 10"	147' 7"	157' 6"	164' 0"
lbs	17640	10360	9260	7830	6830	6280	5840	5180	4630	4410	4190	3750	3530	3310

ft	0-47' 7"	65' 7"	72' 2"	82' 0"	91' 10"	98' 5"	104' 12"	114' 10"	124' 8"	131' 3"	137' 10"	147' 7"
lbs	17640	11800	10580	9040	6830	7280	6720	5950	5400	5070	4850	4410

ft	0-50' 6"	65' 7"	72' 2"	82' 0"	91' 10"	98' 5"	104' 12"	114' 10"	124' 8"	131' 3"
lbs	17640	12680	11350	9700	8490	7830	7230	6500	5840	5510








ft	0-53' 10"	65' 7"	72' 2"	82' 0"	91' 10"	98' 5"	104' 12"	114' 10"
lbs	17640	13780	12350	10470	9260	8490	7940	7060

ft	0-56' 9"	65' 7"	72' 2"	82' 0"	91' 10"	98' 5"
lbs	17640	14770	13230	11240	9920	9480



ft	0 - 42' 12"	82' 0"	91' 10"	98' 5"	104' 12"	114' 10"	124' 8"	131' 3"	137' 10"	147' 7"	157' 6"	164' 0"
lbs	8820	8380	7280	6720	6170	5510	5070	4630	4410	3970	3750	3530

REACTIONS

									
ft	164' 0"	88	kN	ft	164' 0"	70	kN	lbs	59520
	147' 8"	90			147' 8"	68			
	131' 3"	88			131' 3"	64			
	114' 10"	86			114' 10"	60			
	98' 5"	82			98' 5"	52			
								lbs	92590
									Ballast (C25)

MECHANISMS

	max. 8820 lbs			max. 17640 lbs					HP
	197	131	98	98	66	49			32,2
	4410	6610	8820	8820	13230	17640			
	246	164	115	82	59				5,4
	3860	6610	8820	13230	17640				
	400V / 50Hz / 63A / 40A / 32A								



Arcomet, one of the leading crane rental and manufacturing companies in Northern Europe, and Matebat, the French market leader in the sale and rental of tower cranes, will join their forces and their expertise under the name Uperio. The two businesses, whose sales figures reached close to 180 million Euro in 2018 have been under the control of their common shareholder LFPI Group for several years now.

The new Uperio entity with its 550 employees, 350 of them in technical support, will operate a fleet of 2200 cranes in eight countries, making it a global market leader.

The well-known Arcomet brand name will be preserved: manufacturing and sales of the popular self-erecting cranes will be continued under the Arcomet brand, which enjoys great respect in the industry.

P&J / ARCOMET

An **UPERIO** Group Company